



*ESTATE & LETTINGS AGENTS*

## Jeymer Drive, Greenford, UB6



**FOR SALE £275,000 Leasehold**

Major Estates Harrow LTD ~ 77 High Street, Wealdstone, Harrow, HA3 5DQ  
T: 020 8424 8686 ~ E: [sales@majorestate.com](mailto:sales@majorestate.com) ~ [www.majorestate.com](http://www.majorestate.com)

**Major Estates are delighted to offer this charming one-bedroom first-floor maisonette to the market.**

This well-presented property comprises a spacious lounge, a double bedroom, a modern bathroom, and a fully fitted kitchen. With additional features including double glazing, gas central heating, and a private rear garden, this maisonette offers a comfortable living space.

The property is ideally located just 0.5 miles from Greenford Station, providing excellent transport links for commuters.

Further benefits include a long lease of 168 years remaining, with **no service charge** and **no ground rent**—making it an ideal choice for first-time buyers or as a buy-to-let investment.

**Viewings are highly recommended, so don't miss the opportunity to arrange yours today!**

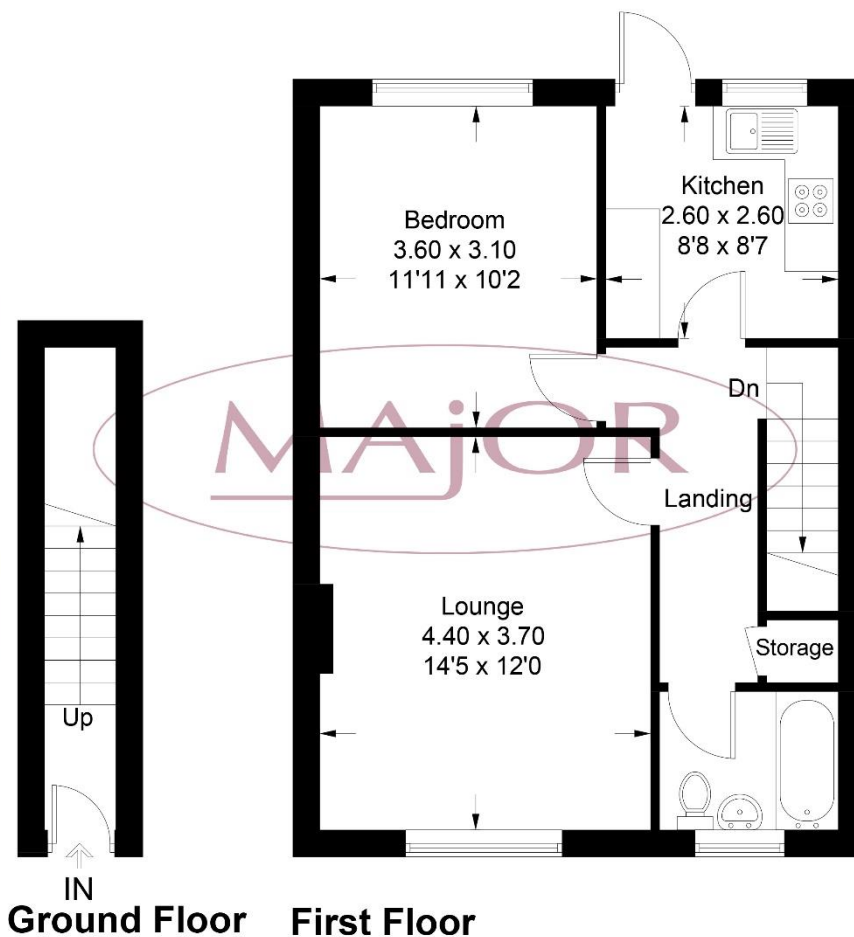


Major Estates Harrow LTD ~ 77 High Street, Wealdstone, Harrow, HA3 5DQ  
T: 020 8424 8686 ~ E: sales@majorestate.com ~ www.majorestate.com



Major Estates Harrow LTD ~ 77 High Street, Wealdstone, Harrow, HA3 5DQ  
T: 020 8424 8686 ~ E: [sales@majorestate.com](mailto:sales@majorestate.com) ~ [www.majorestate.com](http://www.majorestate.com)

Score	Energy rating	Current	Potential
92+	A		
81-91	B		
69-80	C		76 C
55-68	D	65 D	
39-54	E		
21-38	F		
1-20	G		



Approximate Gross Internal Area = 50.2 sq m / 540 sq ft

Illustration for identification purposes only, measurements are approximate, not to scale. Fourlabs.co © (ID1166613)

### **Disclaimer**

The property particulars are produced in good faith based upon information from the vendor and access for visual appraisal to provide a fair description of the property for the guidance of intending purchasers. These should not be construed as a contract or offer. All details and measurements are approximate and are only a general guide. Any intending purchasers should not rely on them as statements or representations of fact but must satisfy themselves by inspection or otherwise as to the correctness of each of them. Please note, we have not tested the bathroom fittings, kitchen appliances, central heating or electrical systems. If there is any point which is of particular importance to you, we will be pleased to see if we can get more information. Life assurance may be required. Written quotations available.

### **Mortgages**

For a competitive, free, no obligation Mortgage quotation please contact our independent, in-house, whole of market FCA registered Mortgage adviser on 020 8424 8686. We deal with the whole market to find the appropriate residential or buy to let Mortgage deals according to your personal circumstances and subject to status.

Your home is at risk if you do not keep up repayments on a mortgage or other loans secured on it.

